



T10 LABEL REWINDER  
USER GUIDE

# CONTENTS

- 1 **Box Contents**
  - 2 **Getting to Know Your T10 Rewinder**
    - Device Overview
  - 3 **Setting Up the Rewinder**
    - Connection
    - Loading the Label
    - Install the Plate
    - Remove the Plate
    - Label Core in Different Sizes
    - Match Up the Empty Label Core and Core Adapter
    - The Modes of Rewinding
  - 4 **What's the Status of the Rewinder**
    - LED Indicator
    - When the Rewinder is Full
  - 5 **Troubleshooting**
    - Sensing Error
    - Idle Load
- Appendix**  
**Product Specifications**

## DOCUMENT DESCRIPTION

T10 Label Rewinder

Version : Rev. 2.01

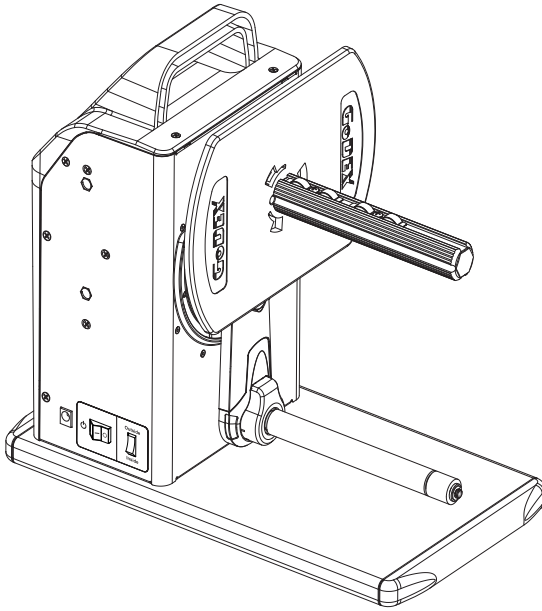
Issue Date : 2012.11.13

Part NO. : 313-041000-203

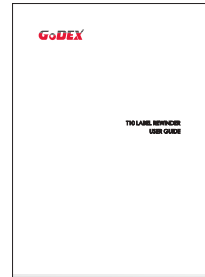
If you are looking for manuals in other languages or newer editions, please visit our website [www.godexintl.com](http://www.godexintl.com).

# 1 BOX CONTENTS

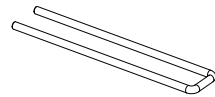
- T10 Label Rewinder



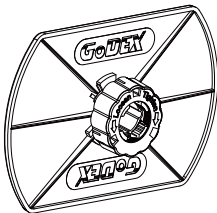
- User Guide



- Paper Clip

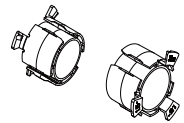


- Paper Stop Plate

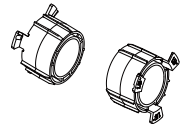


- 1.5'' Adapter

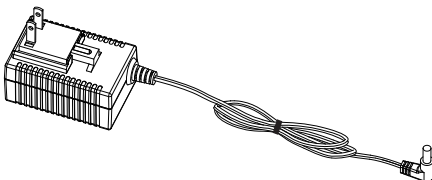
38 mm



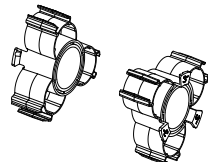
40 mm



- Power Adapter



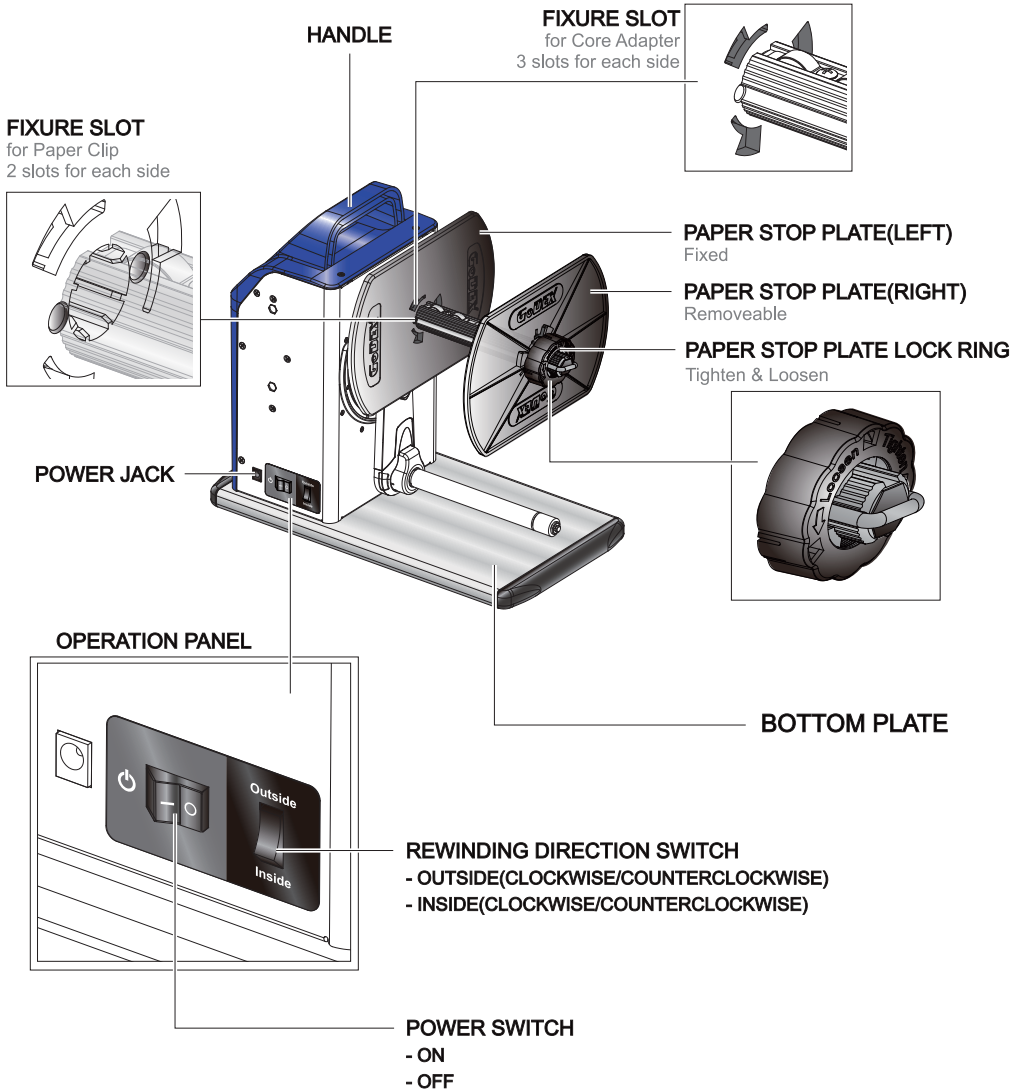
- 3'' Adapter



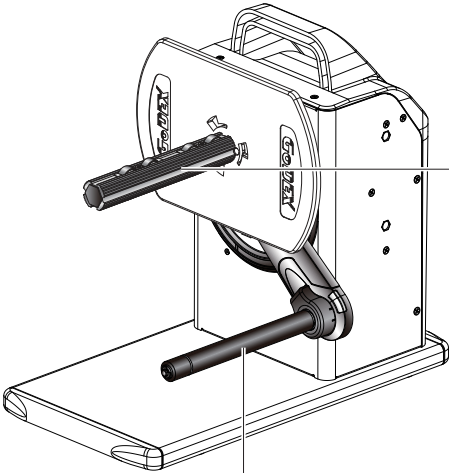
# 2 GETTING TO KNOW YOUR T10 REWINDER

## Device Overview

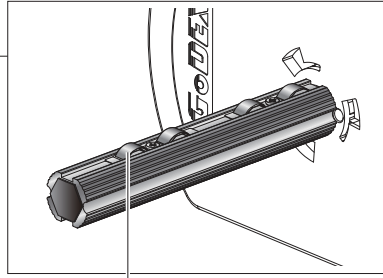
- Front View



- Rear View



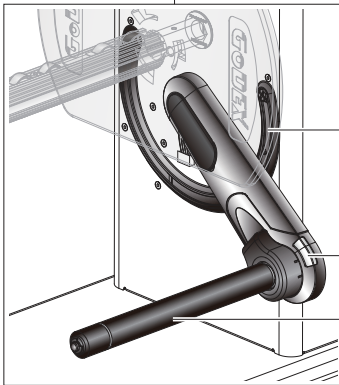
LABEL REWINDING SHAFT



SPRING SLICE

CONTROL MECHANISM

- Start
- Direction
- Status



GUIDE TRACK

LED INDICATOR

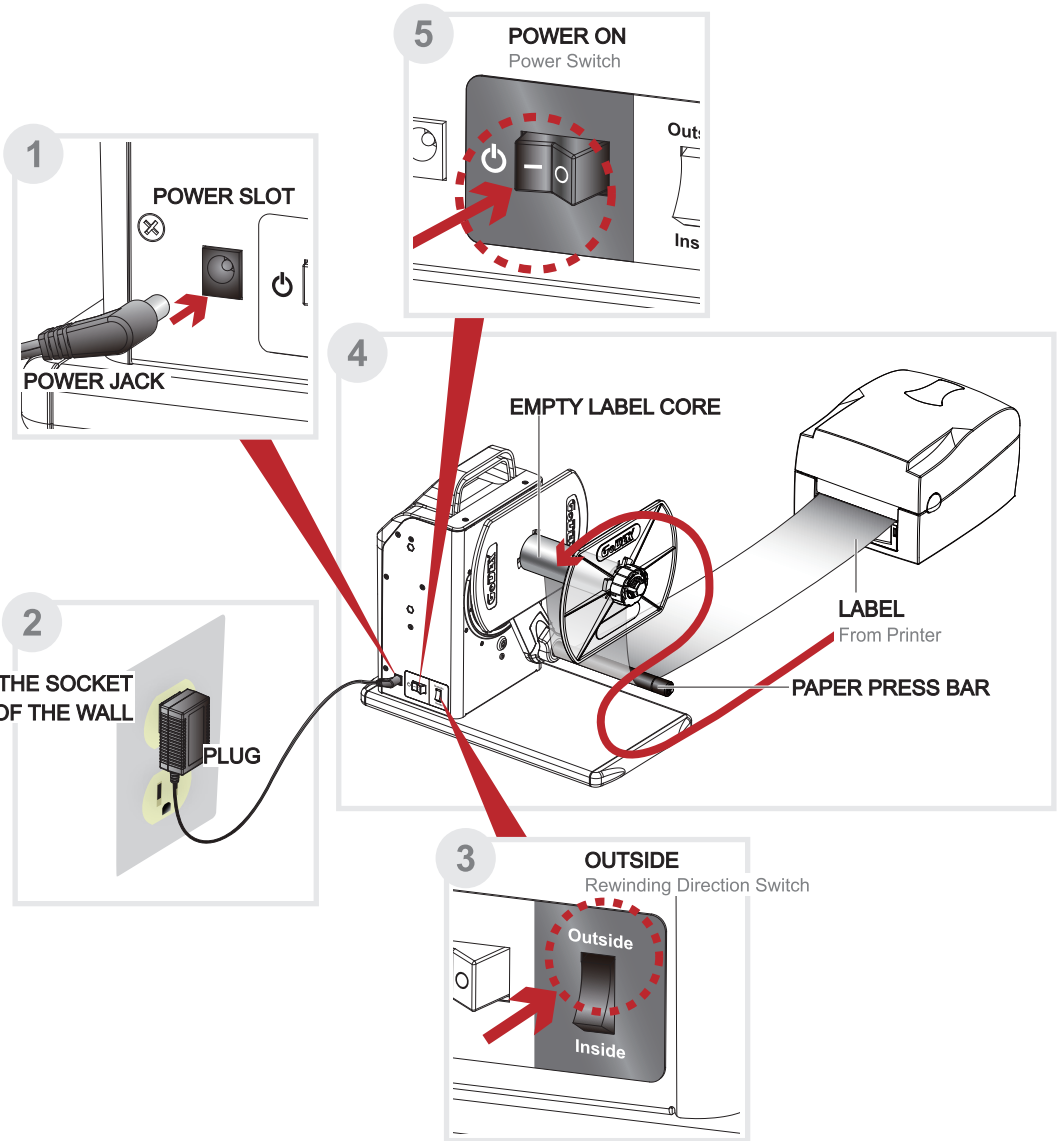
PAPER PRESS BAR



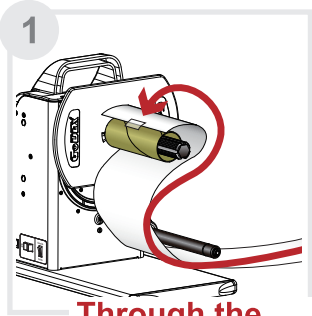
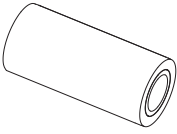
Be Clean

# 3 SETTING UP THE REWINDER

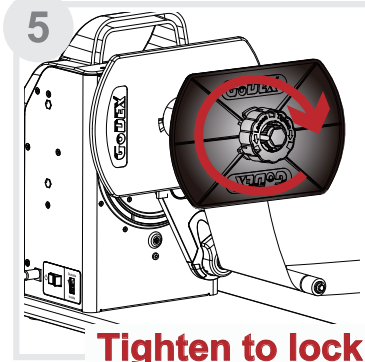
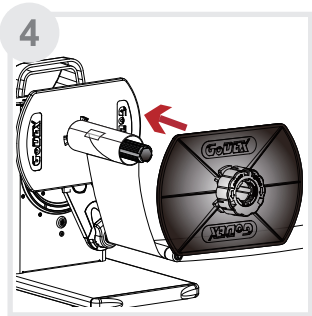
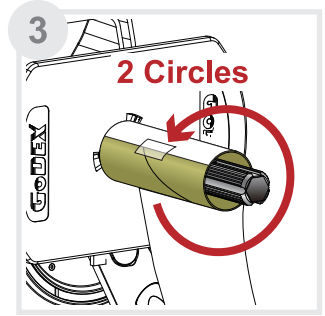
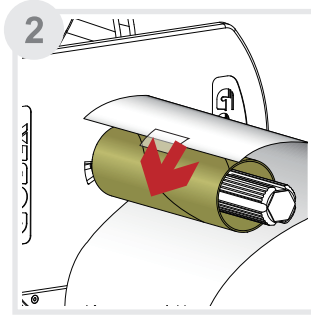
## Connection



# Loading the Label Label Stock



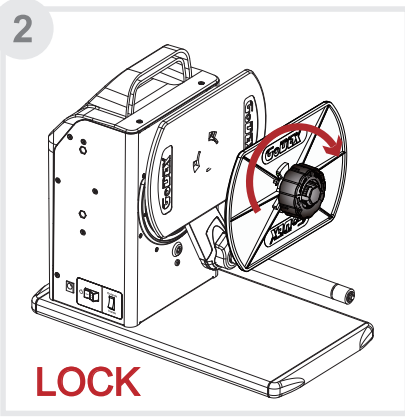
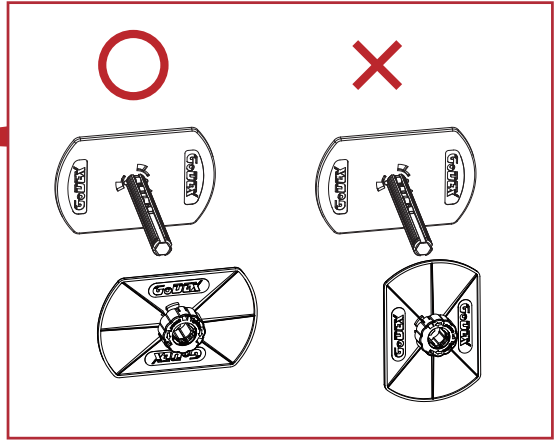
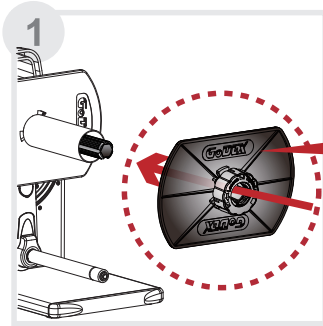
**Through the  
paper press bar**



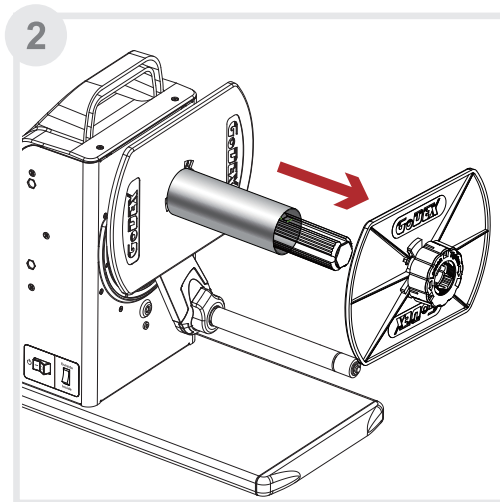
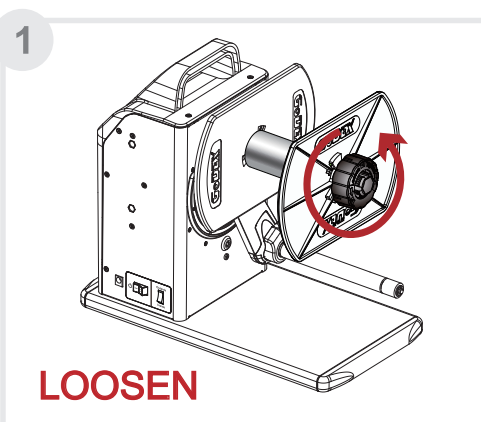
**Tighten to lock**

# Install and Remove the Plate

## Install



## Remove

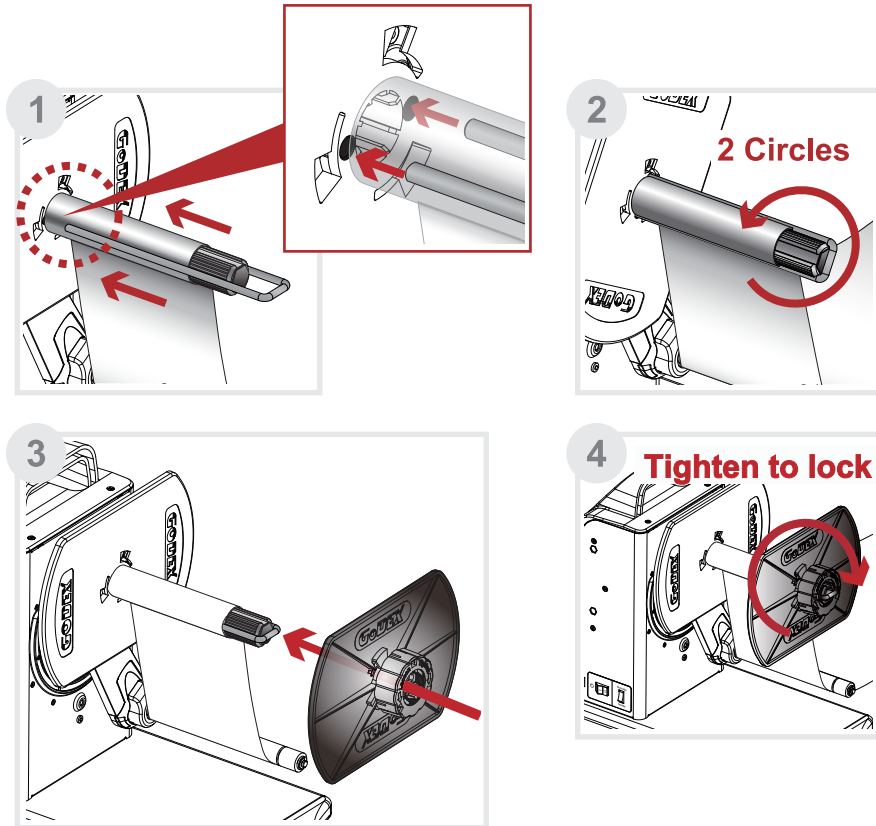
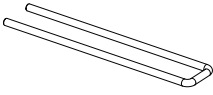




## Label core in different sizes

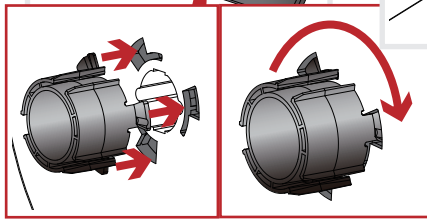
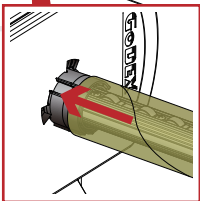
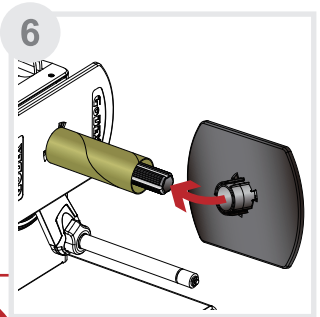
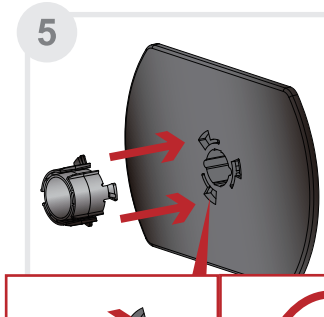
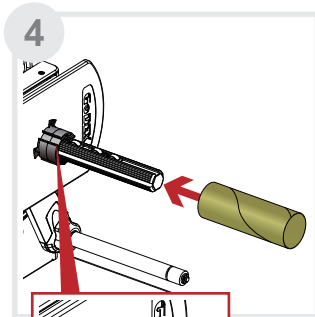
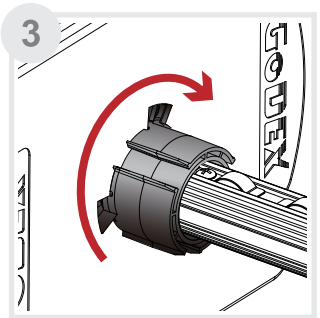
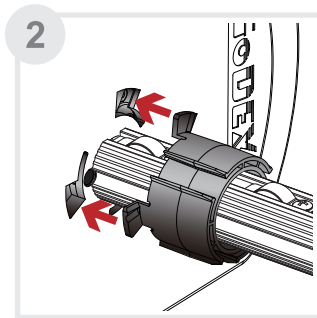
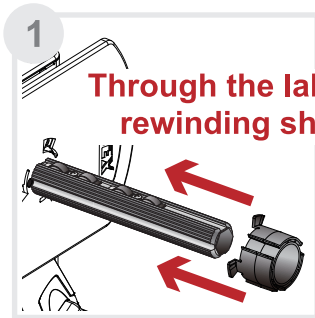
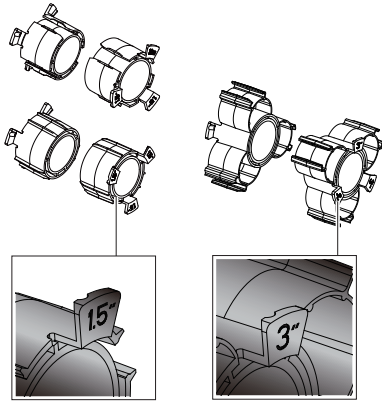
### Paper Clip

for 1", to fix label in position.



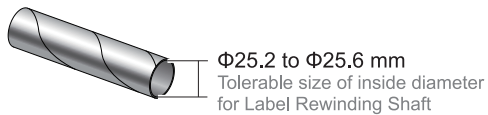
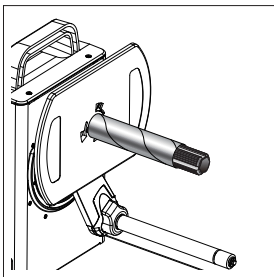
## Core Adapter

for 1.5" and 3" Empty label core.

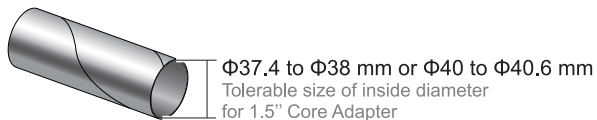
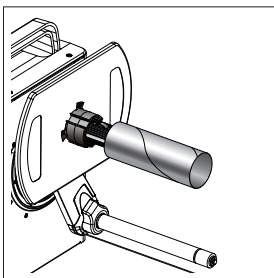


## Match up the empty label core and core adapter

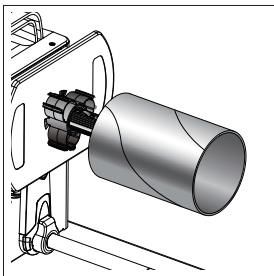
1'' Empty Label Core  
with Label rewinding shaft.



1.5'' Empty Label Core  
with 1.5'' Core adapter.

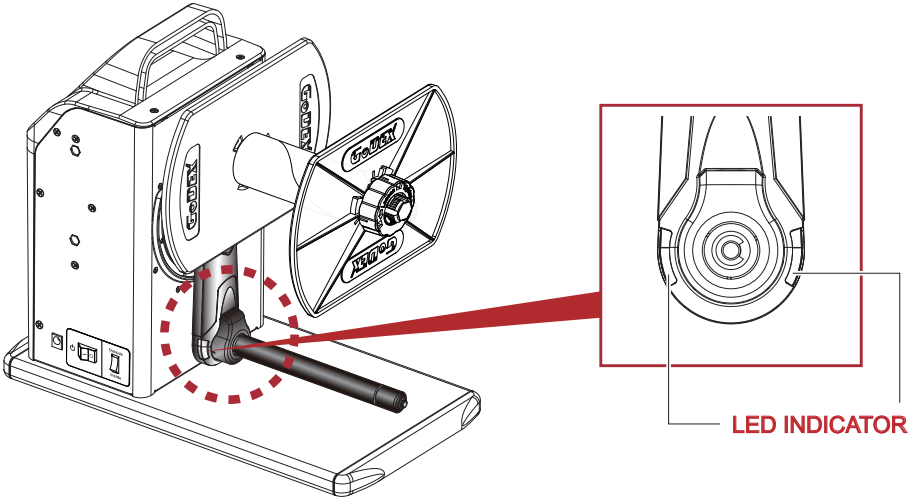


3'' Empty Label Core  
with 3'' Core adapter.



# 4 WHAT'S THE STATUS OF THE REWINDER

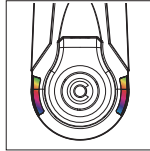
## LED Indicator



STATUS

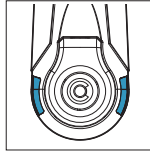
LED INDICATOR

Power ON



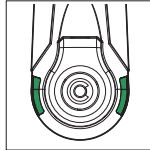
Flash

Outside



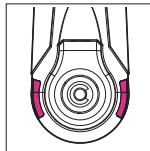
Blue

Inside

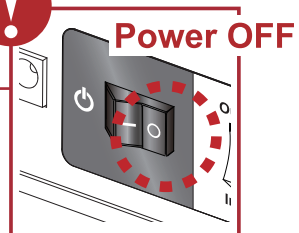


Green

Error / Alert

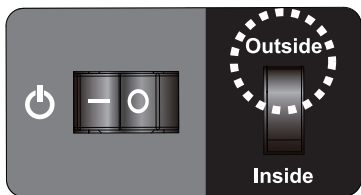


Pink

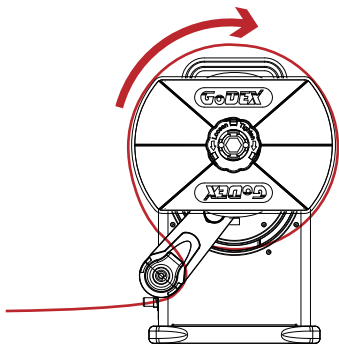


# The Modes of Rewinding

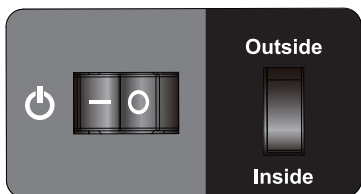
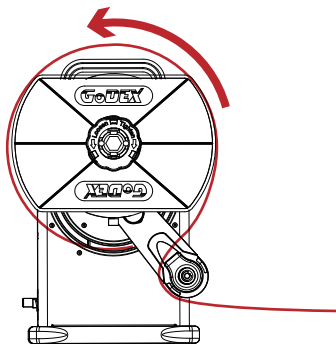
## Outside



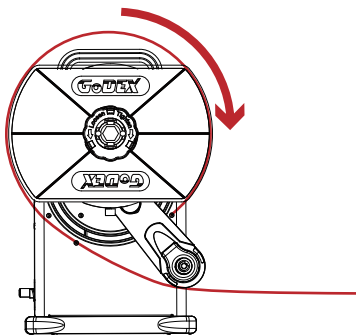
Clockwise



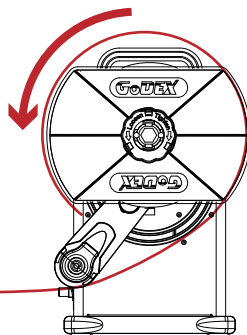
Counterclockwise



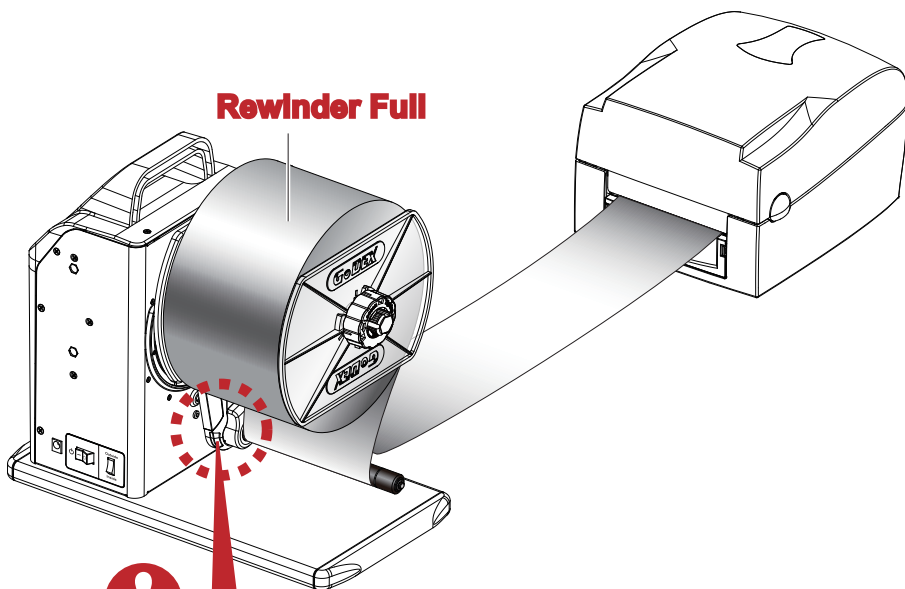
Clockwise



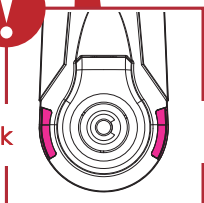
Counterclockwise



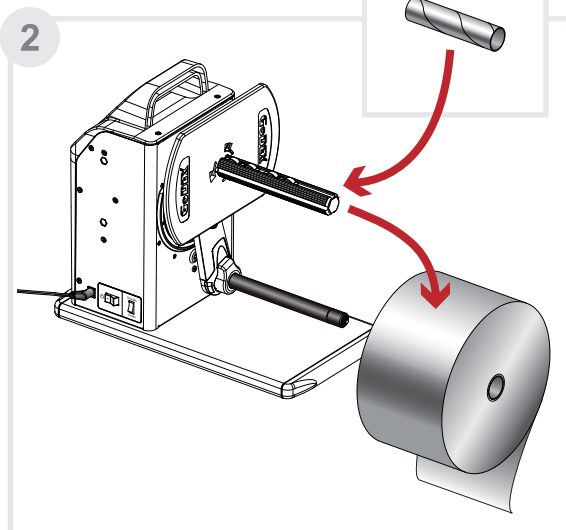
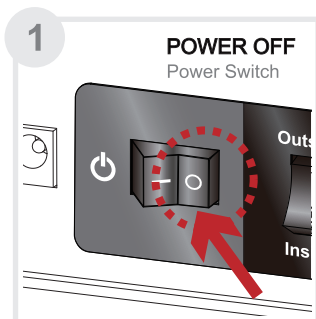
## When The Rewinder Is Full



Pink

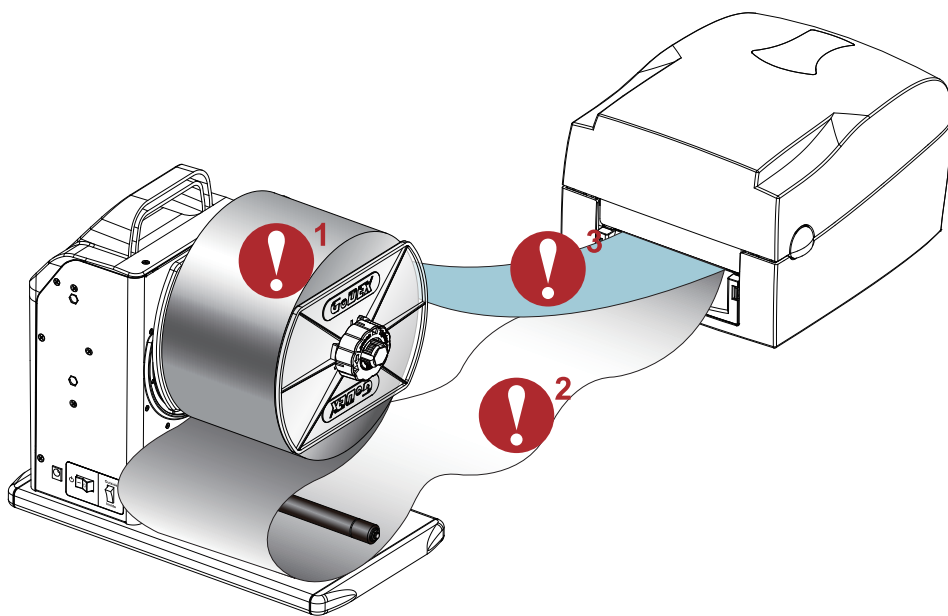


Pink



# 5 TROUBLESHOOTING

## Error / Alert



### Error /Alert

### Description



#### Paper Full

refer to "When The Rewinder Is Full" on Chapter 4



#### Sensing Error

refer to "Sensing Error" on Chapter 5

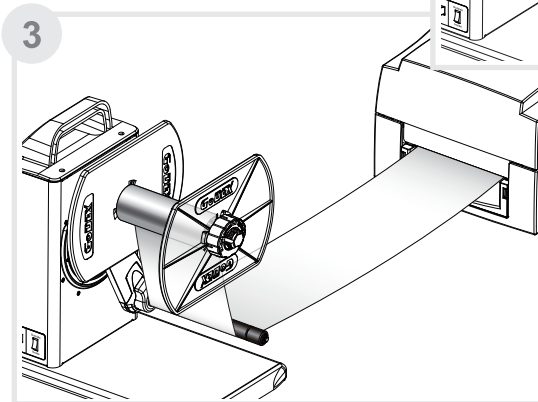
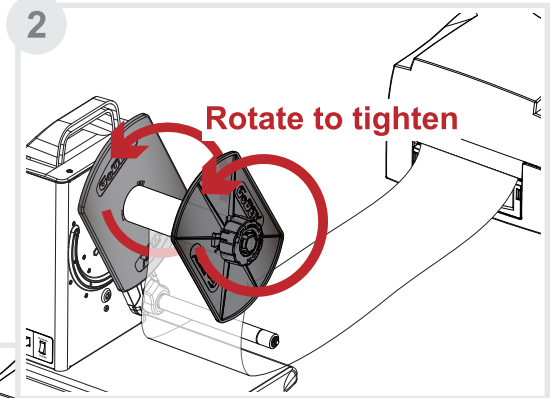
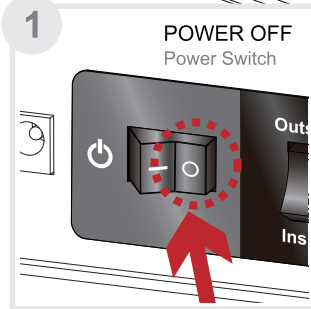
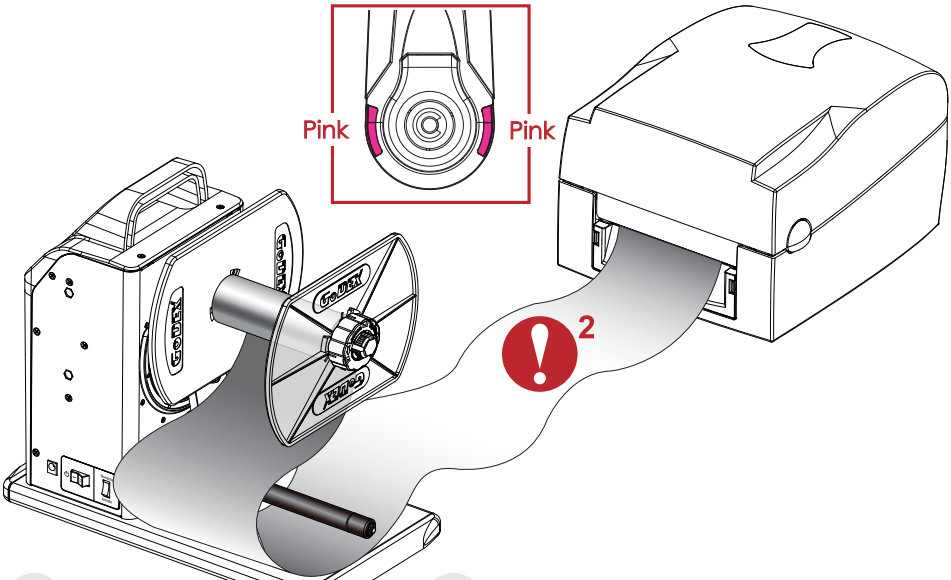


#### Idle Load

refer to "Idle Load" on Chapter 5



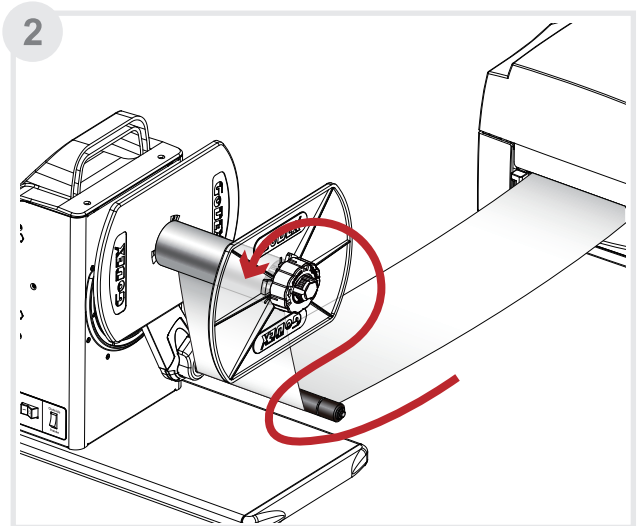
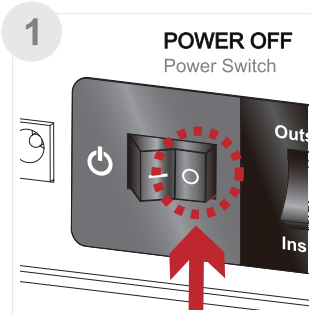
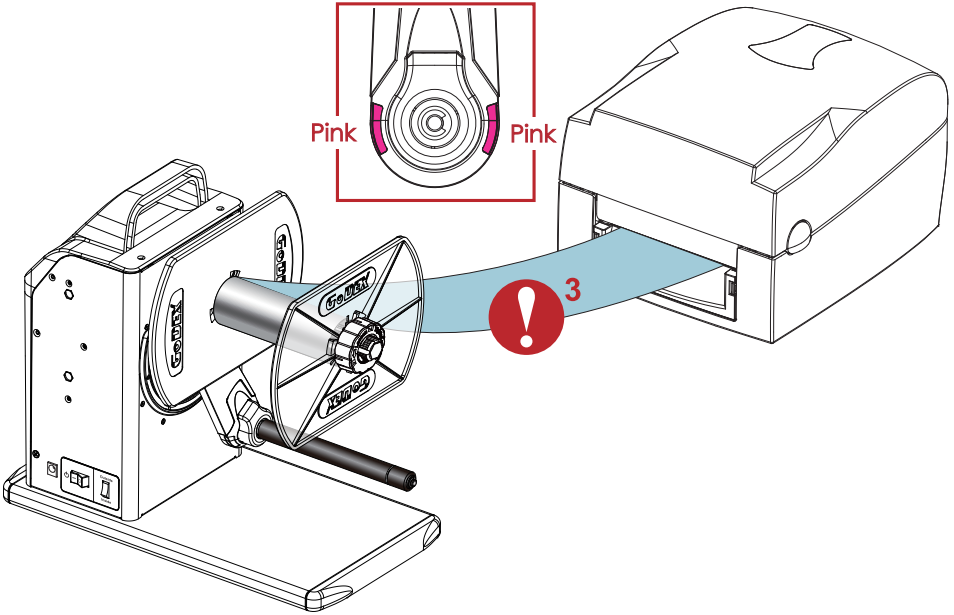
## Sensing Error







### Idle Load



T10 USER GUIDE  
**APPENDIX**

**PRODUCT SPECIFICATIONS**

---

| <b>Model</b>              | <b>T10 Label Rewinder</b>                          |
|---------------------------|--|
| <b>Paper width</b>        | <b>4.72" (Max)</b>                                 |
| <b>Rewind Speed</b>       | <b>12 IPS</b>                                      |
| <b>Label Roll</b>         | <b>8" (Max.)</b>                                   |
| <b>Core Roll</b>          | <b>Coreless</b>                                    |
|                           | <b>1" (25.2 to 25.6 mm)</b>                        |
|                           | <b>1.5" (37.4 to 38 mm)</b>                        |
|                           | <b>1.5" (40 to 40.6 mm)</b>                        |
| <b>3" (76 to 76.6 mm)</b> |  |
| <b>Label Roll Weight</b>  | <b>5 Kg</b>  |
| <b>Rewinding</b>          | <b>Label Inside/Outside</b>                        |
| <b>Switches</b>           | <b>Rewind</b>                                      |
| <b>Motor</b>              | <b>Hybrid Motor</b>                                |
| <b>Power</b>              | <b>100~240VAC 24W, 24V Adapter</b>                 |
| <b>Environment</b>        | <b>Operating Temp.</b> 41°F to 104°F (5°C to 40°C) |
|                           | <b>Storage Temp.</b> -4°F to 122°F (-20°C to 60°C) |
| <b>Humidity</b>           | <b>10-85% (non-condensing RH)</b>                  |
| <b>Size(H*W*D)</b>        | <b>303 mm x 180 mm x 349 mm</b>                    |
| <b>Agency Approvals</b>   | <b>CE, FCC Class A</b>                             |
| <b>Weight</b>             | <b>5 Kg (11 lb)</b>                                |

\* We do not recommend to rewind die-cut labels. Labels might be torn under certain circumstances.



[www.godexintl.com](http://www.godexintl.com)



Barcodes Made Easy

### **Godex International (Headquarters)**

13F, No.168, Jian-Kang Road  
Zhonghe Dist, New Taipei City 235 TAIWAN  
Telephone: +886 2 2225 8580  
Fax: +886 2 2225 8480  
Contact us: [infoGT@godexintl.com](mailto:infoGT@godexintl.com)  
Technical support: [techGT@godexintl.com](mailto:techGT@godexintl.com)

### **Godex Americas**

4023 Camino Ranchero Rd., Ste A  
Camarillo, CA 93012  
Telephone: +1 805 987 5100  
Fax: +1 805 987 5115  
Contact us: [infoGA@godexintl.com](mailto:infoGA@godexintl.com)  
Technical support: [techsupportGA@godexintl.com](mailto:techsupportGA@godexintl.com)

### **Godex China**

5F, No.68 Jiang Chang 1 Road Shanghai, China  
Telephone: +86 21 5665 1313  
Fax: +86 21 5665 7455  
Contact us: [shanghai@godexintl.com](mailto:shanghai@godexintl.com)  
Technical support: [support@godexintl.com](mailto:support@godexintl.com)

### **Godex Europe**

Arnzhauschen 36 D-42929  
Wermelskirchen, Germany  
Telephone: +49 2193 53396 0  
Fax: +49 2193 53396 69  
Contact us: [infoGE@godexintl.com](mailto:infoGE@godexintl.com)  
Technical support: [technikGE@godexintl.com](mailto:technikGE@godexintl.com)